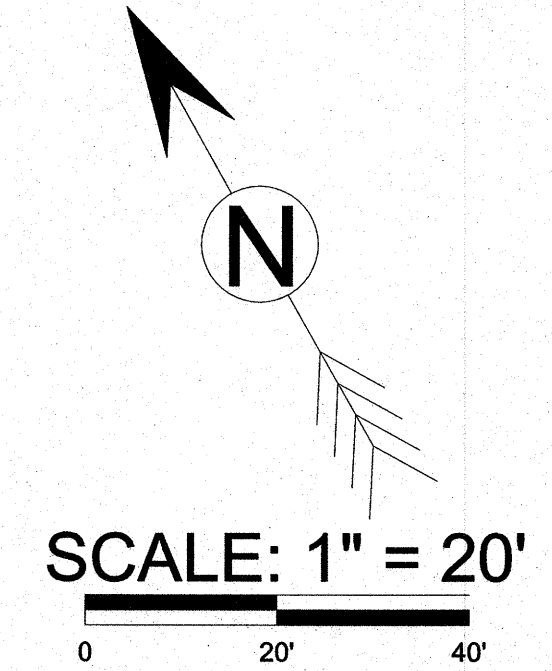
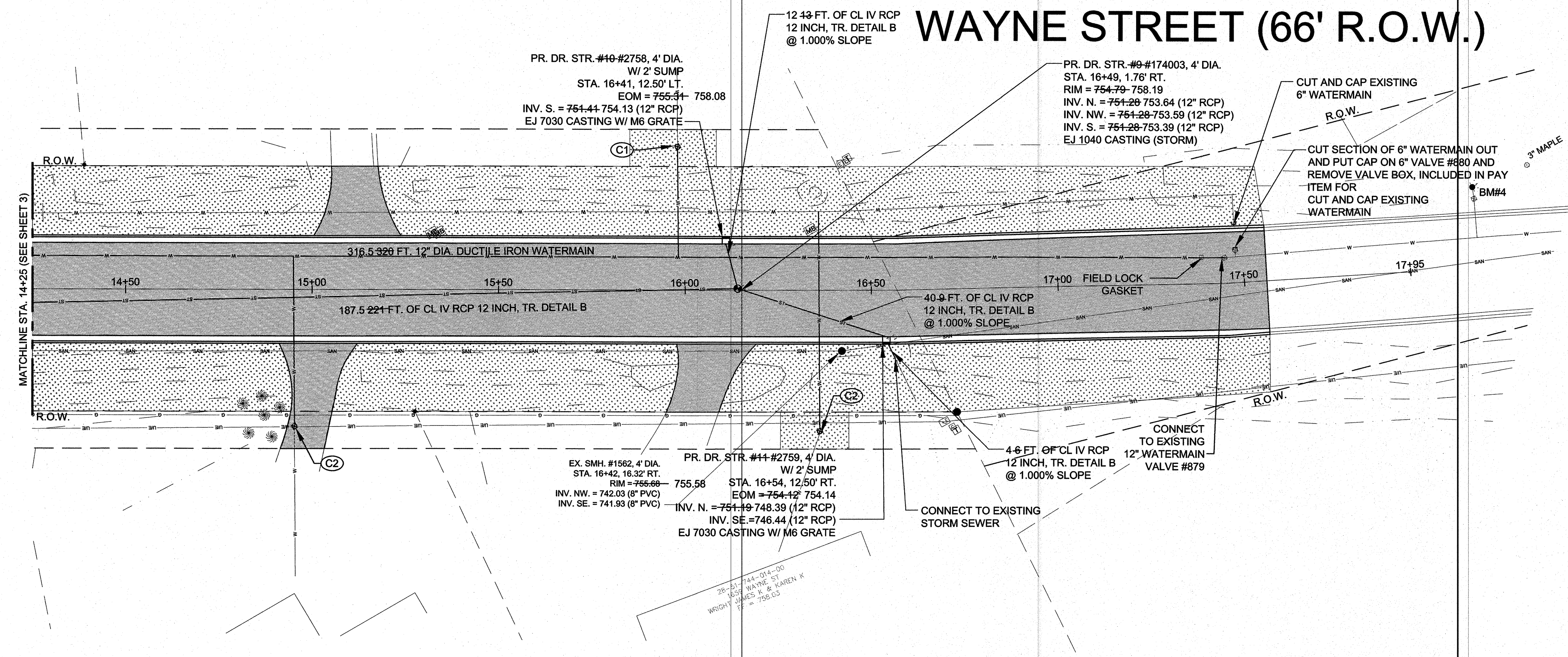


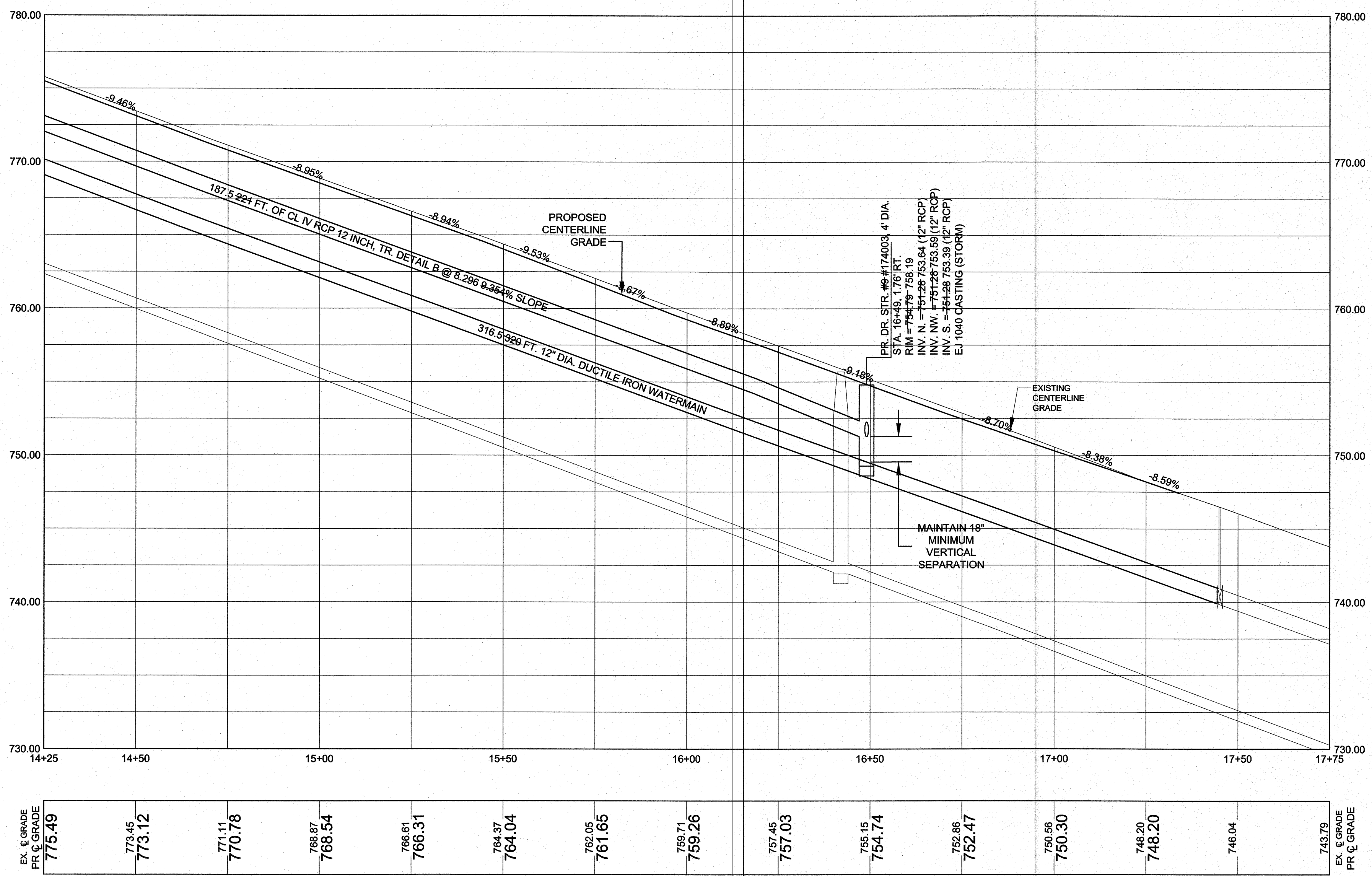
# WAYNE STREET (66' R.O.W.)



- ### LEGEND
- FOUND PROPERTY CORNER
  - BENCHMARK
  - SIGN
  - GAS BOX
  - UTILITY POLE
  - GUY WIRE
  - WATER VALVE
  - PED LIGHT POLE
  - ELECTRIC RISER
  - TELEPHONE RISER/BOX
  - FIRE HYDRANT
  - CATCHBASIN
  - BEEHIVE GRATE CATCHBASIN
  - STORM MANHOLE
  - SANITARY MANHOLE
  - DECIDUOUS TREE
  - CONIFEROUS TREE
  - TREE LINE
  - SHRUB LINE
  - OVERHEAD ELECTRIC
  - UNDERGROUND ELECTRIC
  - OVERHEAD TELEPHONE
  - UNDERGROUND TELEPHONE
  - OVERHEAD CABLE TV
  - UNDERGROUND CABLE TV
  - SANITARY SEWER
  - STORM SEWER
  - WATERMAIN
  - GUARDRAIL
  - FENCE
  - TOP/BOTTOM OF SLOPE

BENCHMARK DATA  
BENCHMARK # 4  
"X" ON TOP OF 6" PUMPER  
HYD. #737  
ELEV. = 742.52

- ### HATCH LEGEND
- PROPOSED DRIVEWAYS, NON REINFORCED CONC., 6"
  - PROPOSED LAWN AREA



SCALE: H, 1" = 20' ; V, 1" = 5'

## CITY OF TRAVERSE CITY 2013 PAVING AND RESURFACING PROJECTS PLAN AND PROFILE SHEET

Revision/Issue	Date
PERMIT SET	7-01-13
BID SET	7-16-13
AS-BUILT JLC	11-26-13
Date:	7-01-13
Project No:	2013-03
Drawn by:	JDM
Scale:	1" = 20'
Sheet No:	4 OF 4